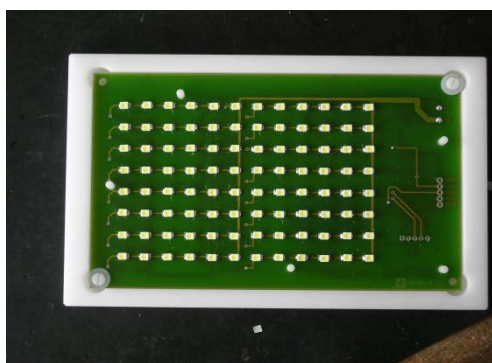


PHYCOMAT LED Unit

Technical Info & Pricing
(July 20, 2009)

LED Uover HAM 3960-L96



Microcontroller for light intensity and light-dark cycle control. 0...24h. Irradiation intensity continuously variable from 0.15 to 15 $\mu\text{Mol m}^{-2} \text{s}^{-1}$.

Integrated circuit board with 96 SMD-LEDs in standard 96-well format, each fixed in central orientation above the corresponding PHYCOMATs filter plate well.

Stackable design made of white Delrin® plastic allows a space-saving storage of several PHYCOMAT units.

Interface for a docking station.

Connector to a 24VDC wall power supply with a DC-power plug. Max. power input 30 mA.

Order No.: **HAM3960-L96**

Price **€393.00**

Power Supply Type GS06E Type GS15E



Power supply for PHYCOMAT LED units. 24 VDC

Connectors
Input: EURO-Plug for 230V
Output: modified DC power plug

Rating
GS06E: 24 VDC, 250 mA
GS15E: 24 VDC, 700 mA

Order No.: **HAM3960-GS06E**
HAM3960-GS15E

Price: **HAM3960-GS06E €45.00**
HAM3960-GS15E €53.00

Contact Plug Board V8



8-fold multi contact plug board with integrated cable to connect it to a 24 VDC power plug.

Eight LED covers HAM3960-L96 can be supplied by a single power supply GS06E or GS15E.

Order No.: **HAM3960-V8**

Price: **€132.00**

Docking Station DS



The docking station allows programming of a LED cover regarding circuit time and irradiation intensity.

The device is connected via a RS232 interface with a PC computer operating the control software.

Connector: 9-pol. DSUB-F connector

The control software will be supplied with the docking station.

Order No.: **HAM 3960-DS**

Price : **€325.00**
License control software **€ 24.00**

Lieferbedingungen:

Prices do not include shipping and customs duty.