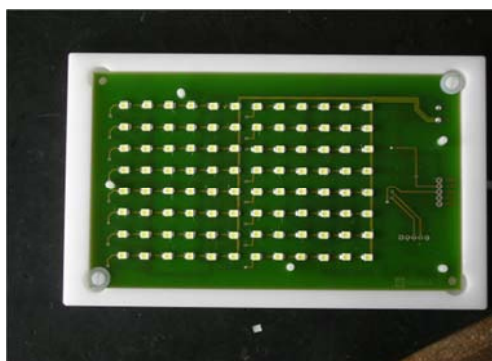


## PHYCOMAT LED Unit

Technical Info  
(December 14, 2010)

### LED Cover HAM 3960-L96



Microcontroller for light intensity and light-dark cycle control. 0...24h. Irradiation intensity continuously variable from 0.15 to 15  $\mu\text{Mol m}^{-2} \text{s}^{-1}$ .

Integrated circuit board with 96 SMD-LEDs in standard 96-well format, each fixed in central orientation above the corresponding PHYCOMATs filter plate well.

Stackable design made of white Delrin® plastic allows a space-saving storage of several PHYCOMAT units.

Interface for a docking station.

Connector to a 24VDC wall power supply with a DC-power plug. Max. power input 30 mA.

Order No.: **HAM3960-L96**

### Power Supply Type GS06E Type GS15E



Power supply for PHYCOMAT LED units. 24 VDC

Connectors  
Input: EURO-Plug for 230V  
Output: modified DC power plug

Rating  
GS06E: 24 VDC, 250 mA  
GS15E: 24 VDC, 700 mA

Order No.: **HAM3960-GS06E**  
**HAM3960-GS15E**

## Algenion GmbH & Co. KG

Waldstraße 23-D5  
63128 Dietzenbach  
phycomat@algenion-biotec.de  
www.algenion-biotec.de

# Algenion<sub>2</sub>

### Contact Plug Board V8



8-fold multi contact plug board with integrated cable to connect it to a 24 VDC power plug.

Eight LED covers HAM3960-L96 can be supplied by a single power supply GS06E or GS15E.

Order No.: **HAM3960-V8**

### Docking Station DS



The docking station allows programming of a LED cover regarding circuit time and irradiation intensity.

The device is connected via a RS232 interface with a PC computer operating the control software.

Connector: 9-pol. DSUB-F connector

The control software will be supplied with the docking station.

Order No.: **HAM 3960-DS**

### Lieferbedingungen:

Prices do not include shipping and customs duty.